

# airvent

## AquWall SI HY MX20



**DIMENSIONS:**  
(width x height x depth)



**AquWall HY:** 220 x 150 x 52 [mm]



**KE 125:** 186 x 186 x 15 [mm]

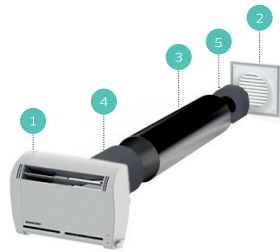
### KEY FEATURES:

- ✓ Easy installation in external walls.
- ✓ Automatic airflow regulation via a humidity sensor.
- ✓ Option for manual partial closing of the vent.
- ✓ Effective protection against external noise.
- ✓ Aesthetic appearance.
- ✓ Recommended for use with BHY PRO or Alize Hygro exhaust grilles.

### CONSTRUCTION:

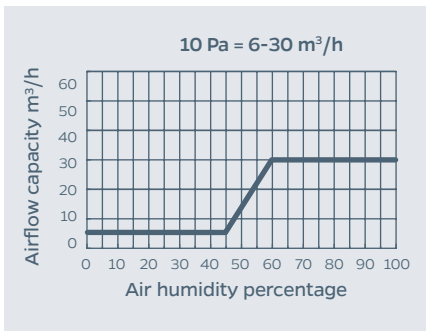
The AquWall SI HY set includes:

- 1 AquWall HY regulator with a Ø 125 mm connector.
- 2 KE125 - external intake grille with a Ø 125 mm connector.
- 3 Spiro Ø 125 mm pipe (optional).
- 4 Acoustic silencer.
- 5 ACO-K silencer.

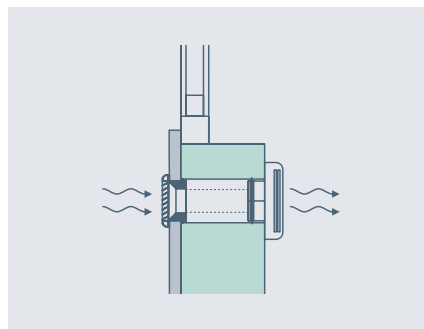


\* Also available in a diameter of Ø 100.

### AIRFLOW:



### MOUNTING EXAMPLE:



### ACOUSTIC REDUCTION:

Acoustic Reduction	closed position		open position	
	Dn, e, w (C; Ctr)	Dn, e, A2*	Dn, e, w (C; Ctr)	Dn, e, A2*
<b>AquWall SI HY MX20</b>	58 (-1; -4) dB	54 dB	56 (-1;-3) dB	53 dB

\*\*Dn, e, A2: noise reduction index, focusing on low frequencies such as urban traffic, disco music, slow-moving trains, and distant jet aircraft.